

The Steady Stamp Stamping Jig

By Jeff Fulkerson

This block will help you to hold your stamps perfectly perpendicular to your metal, allowing you to get a complete imprint every time! You will feel more confident to strike a strong, sure blow from your mallet so your stamp imprint will take on the first try, eliminating crooked, incomplete, and double stamps.

Materials List

Scraps of metal for practice

Tool List – Don't forget Safety Glasses!

- Steady Stamp Stamping Jig
- Brass mallet
- Stamps
- Steel bench block



The Problem with Stamping

One of the problems in getting a good, clean impression from stamps is making sure they're perpendicular to the metal just before striking with the brass mallet. It's very easy to move or rock the stamp just a little right before striking, which creates an incomplete image.

You also risk hitting your fingers!

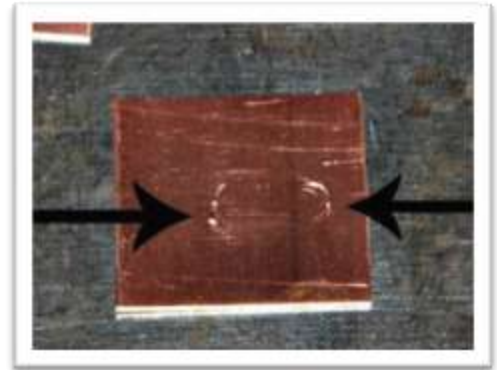
Another common problem is not striking the stamp straight on. If the mallet hits the stamp at an angle, an incomplete imprint is created, again, there is risk of hitting fingers with the mallet. Both of these issues cause the artist to not strike the stamp hard enough to get a good impression, especially with larger stamps.

With the Steady Stamp jig, it allows you to hold the stamp perfectly perpendicular to the metal every time!



TECH TIP: Using a brass mallet, which is made of a relatively softer metal, is easier on your stamps and also prevents the mallet from glancing off the stamp.

You can see how both of these stamping errors give an incomplete image.



Using the Steady Stamp Jig

Step 1. Gather the materials for stamping, including your Steady Stamp jig.

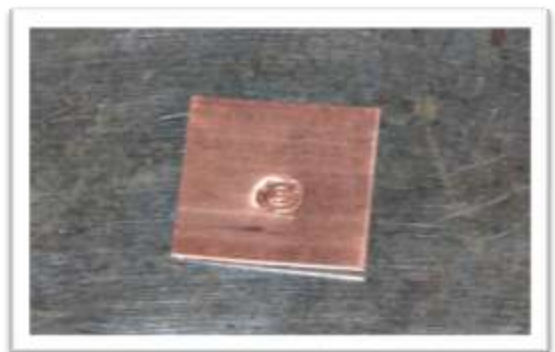


Step 2. Keep your fingers out of harm's way. If stamping on a piece that is smaller than the Steady Stamp jig, use a piece of scrap metal that is the same gauge as the piece being stamped, and support the back end of the Steady Stamp jig.



Step 3. This is an ImpressArt rose stamp, which is large and imprints a lot of metal, which makes it very difficult to get a good impression.

As you can see, now we have a perfect impression using the Steady Stamp jig.



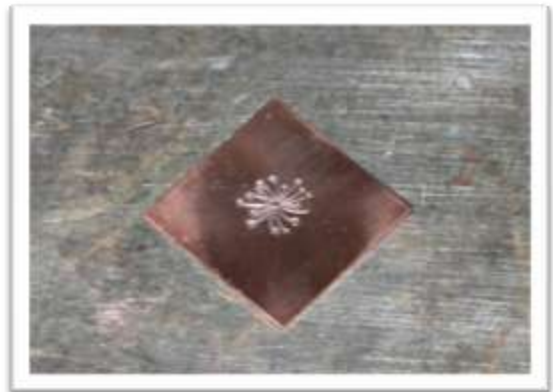
Step 4. The stamp on the left is ImpressArt's ½" Dandelion stamp, which requires a VERY strong strike to get a good, clean impression.



Step 5. Using the Steady Stamp jig and placing a piece of scrap the same gauge as the piece we're stamping on under the back of the jig, this large stamp can be used with confidence!



Check out the great impression you can get the first time with the Steady Stamp jig...



Review Questions

- 1) True/False. One of the biggest problems with stamping is incomplete stamps, caused by the stamp not being completely perpendicular to the metal.
 - a) True
 - b) False
- 2) True/False. If the Steady Stamp jig is larger than the metal you're stamping, just balance it on the metal.
 - a) True
 - b) False

- 3) What kind of hammer is recommended for stamping?
- a) Rawhide mallet
 - b) Utility hammer
 - c) Brass mallet
- 4) What is placed under the metal being stamped to ensure that the impression is a good one?
- a) Steel bench block
 - b) Thin cardboard
 - c) Egg carton foam