

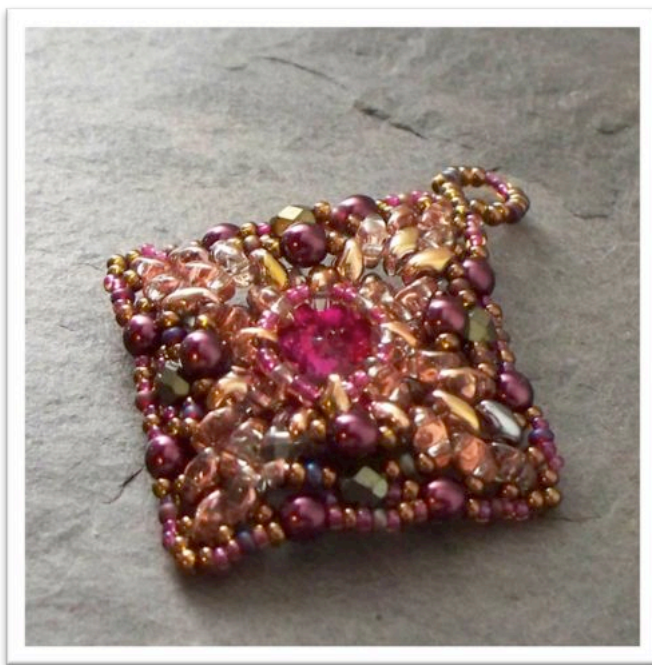
## Romanov Pendant

By Valorie Clifton

Romanov was designed with an old world, vintage feel in mind. I'm so often inspired by antique brooches, pendants, and textiles. Romanov reminds me of all three in one!

This little pendant uses my favorite beads: Super Duos, druks and a Rivoli. For more information about these beads, check out my Bead Encyclopedia, Part 2!

This tutorial is intended for those who have a basic knowledge of beading and thread tension. You should also be comfortable following diagrams and charts. This pendant makes a beautiful gift.



### Materials List

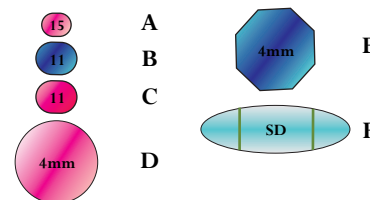
- 56 Super Duos
- 12 - 4mm rounds, bicones or fire-polished beads, color 1
- 4 - 4mm rounds, bicones or fire polished beads, color 2
- Size 15/0 round seed beads
- Size 11/0 round seed beads, color 1
- Size 11/0 round seed beads, color 2
- 1 - 12mm Rivoli

### Tool List

- Size 10 or 12 beading needle
- 6 lb test beading thread. Fireline brand thread in Smoke or Crystal is highly recommended.
- A bead mat, bead tray, scissors, a bead reamer and a thread burner are helpful tools.

### Beads Used in This Project...

- Color A: 15/0 seed beads, Pink (A)
- Color B: 11/0 seed beads, Blue (B)
- Color C: 11/0 seed beads, Pink (C)
- Color D: 4mm bead, Pink (D)
- Color E: 4mm bead, Blue (E)
- Color F: Super Duo, Turquoise (F)



### Diagram Tips

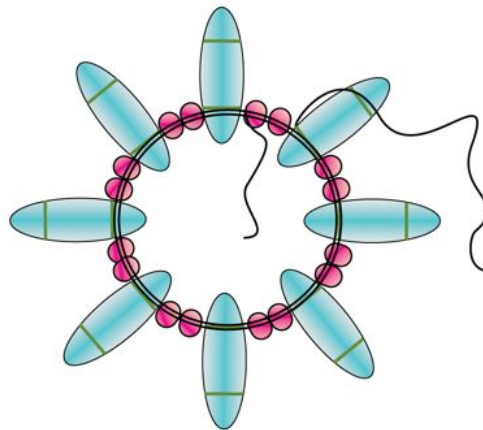
- A black dot in the diagram shows the thread position in the beginning of the round. It is not a knot unless specified in the written directions.
- "Stepping Up" means sewing through the designated bead so that the thread is in the correct position to start the next round or step.
- Beads from the previous rounds are shown in yellow, and the previous round's thread is not shown.
- Items between brackets ([steps]) or asterisks (\*\*steps\*\*) are repeated a number of times. Look for more information following these symbols.

### Step 1

On a one yard piece of beading thread, pick up 1F and 2As. Repeat 7 times for a total of 8 added Fs and 16As.

Form a circle and tie an overhand knot, leaving a 6 inch tail. After knotting, weave the tail thread in the bead circle and snip or burn the end.

To step up, sew through the bottom of an F in the ring and back up through the top hole, as shown.



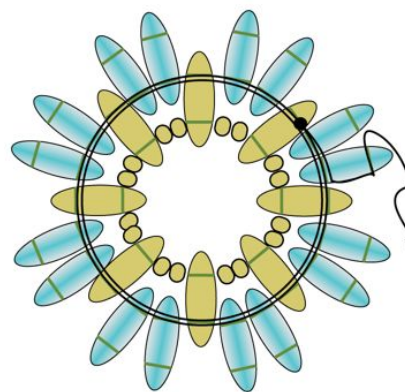
**TIP:** It's best to maintain proper thread tension with this or any bead project. Aim for a medium to tight tension with no loose gaps.

### Step 2

Exiting the F from Step 1:

**[Add 2Fs and sew into the top hole of the next F]** around, for a total of 16 added Fs.

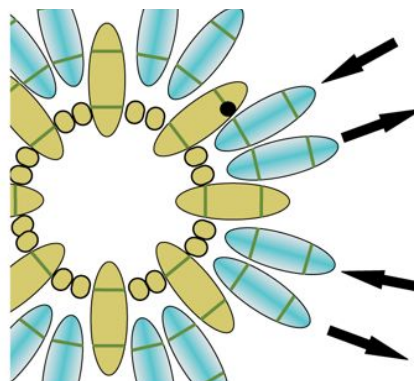
Sew through again to reinforce. To step up, sew through the first 2 Fs added. Sew up through the top hole of the second F (the right hand one), as shown.



### Step 3

Take a closer look at the last round. We are going to be flipping the Super Duos forward and backward for this step.

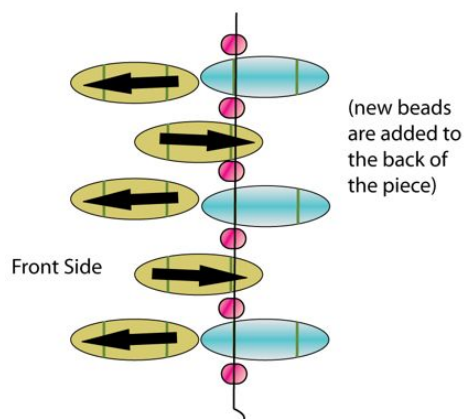
The first of each pair (the left one) gets flipped to the front of the piece. The second of each pair of Fs (the right one) gets flipped toward the back. The back ones will act as the bezel cup to hold the Rivoli. *Remember: Left one to the front, right one to the back.*



### Step 4

Exiting the F from Step 2 (it should flip to the back):

**[Pick up 1A, 1F, 1A and sew into the next F that is flipped to the back from Step 3.]** Repeat 7 times for a total of 8 new Fs added and 16 new As added. Refer to the diagrams as needed.

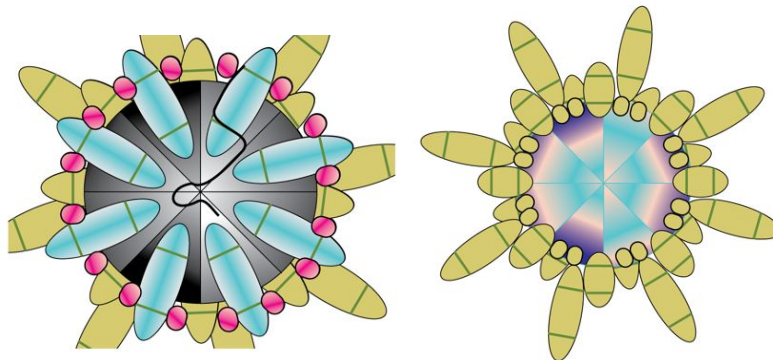


## Step 5

It's time to pop the Rivoli in the bezel, so do that with the front of the Rivoli facing downward.

These diagrams recap what we have at the end of Step 4: A rear view (the first one) and the view from the front (the second one).

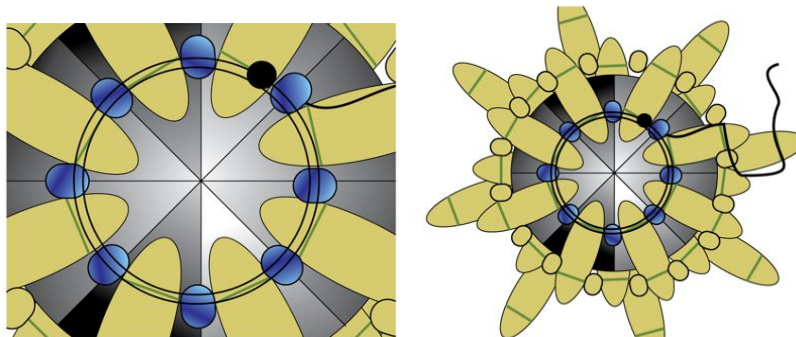
Still working on the rear side: to step up, sew along the side of an F and through the top hole (or inward one in this case), as shown in the first diagram.



## Step 6

Exiting the F from Step 4: **[Add 1B and sew into the adjacent F]** around, for a total of 8 added Bs. Sew through again to reinforce, as shown in the third diagram.

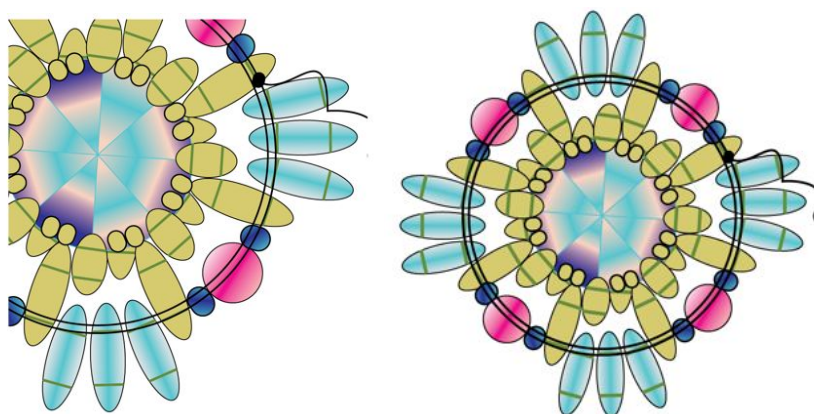
To step up, sew back through the beads to the outer edge, as shown. Exit near an F on the outer edge and sew up through the top hole of the F.



## Step 7

Exiting the F from the previous step:

**[Add 3Fs and sew into the next F in the outer edge. Add1B, 1D, 1B and sew into the next F]** 4 times around, as shown. To step up, sew through the top hole of the first F added, as shown.



## Step 8

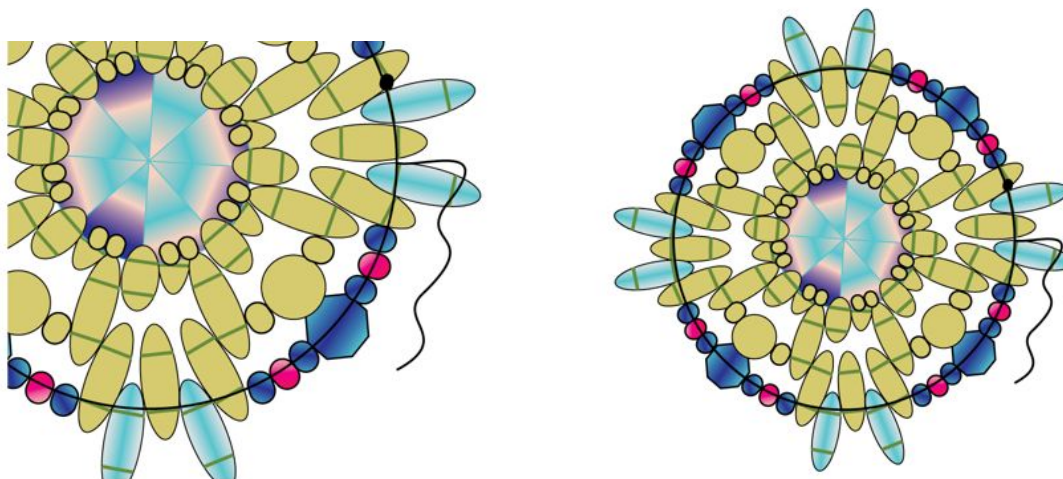
**\*\*Exiting the F from the previous step: [Add 1F and sew into the adjacent F] 2 times.**

Add 1B, 1C, 1B, 1E, 1B, 1C, 1B and sew into the adjacent F. \*\*

Repeat the steps between the \*\* \*\* 3 more times. You should have something similar to the diagrams.

Sew through this round again to reinforce. Your piece may be cupping toward the back by now. Don't panic! It's supposed to.

To step up, sew through the first F added and an F from the prior step, as shown. Sew through the top hole of the second F added.



## Step 9

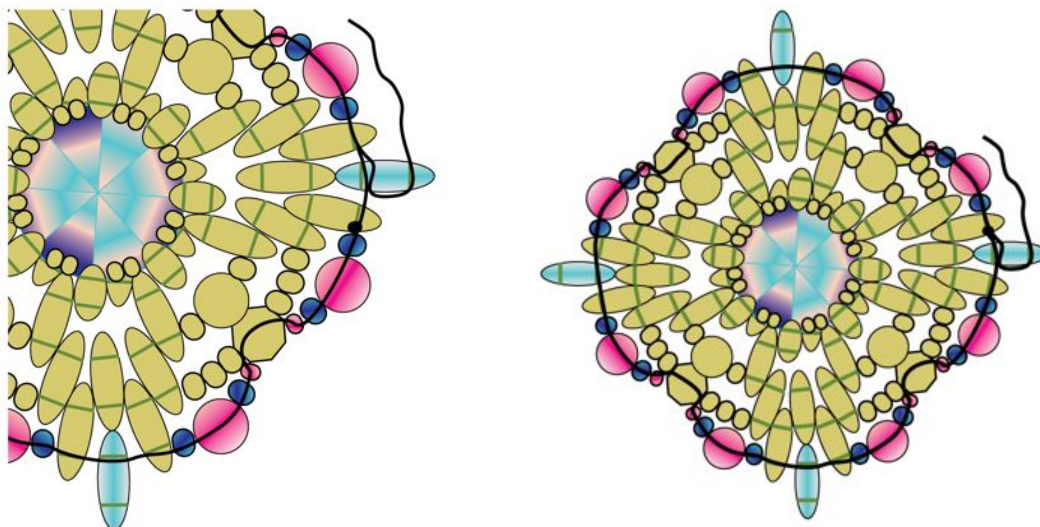
**\*\*Exiting the F from the previous step: Add 1B, 1D, 1B, 1A and sew into the E from the previous step. Add 1A, 1B, 1D, 1B and sew into the adjacent F.**

Add 1F and sew into the next F.\*\*

Repeat this around 3 more times for a total of 4 new Fs added and 4 sides of beads added. You will have a diamond shape now, as shown.

Sew through this round twice to reinforce.

To step up, sew through beads to exit the nearest F and sew through the top hole, as shown.



## Step 10

Exiting the F from the previous step, add 3Bs and circle around the tip of the F to make a picot. Sew back through the same top hole of the F, as shown.

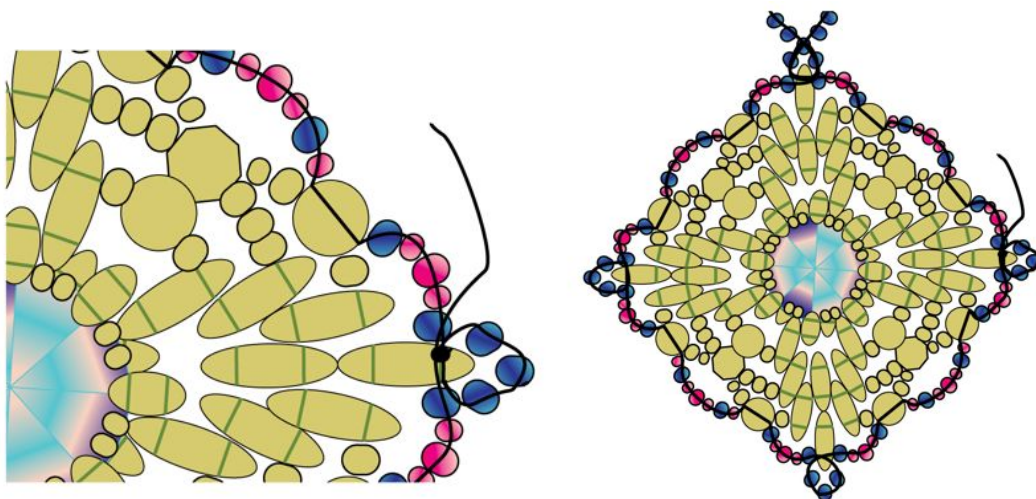
\*\*Add 1B, 1A, 1C, 1A, 1B and sew through the D, as shown.

For the center of the sides, add 1A, 1B, 1A, 1C, 1A, 1B, 1A and sew through the next D, as shown.

Add 1B, 1A, 1C, 1A, 1B and sew through the F, as shown.

At this F, make a picot, just as before. \*\*

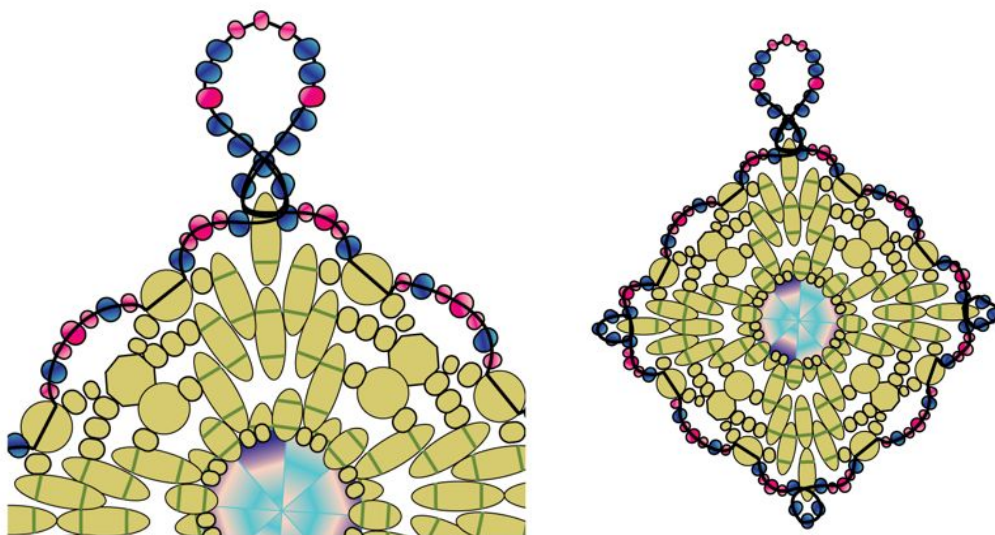
Repeat this process 2 times more.



## Step 11

After creating the last picot, sew back around and through the picot again to exit the peak bead. String 2Bs, 1C, 2Bs, 3As, 2Bs, 1C, 2Bs and sew through the peak of the picot. Sew around the loop again to reinforce.

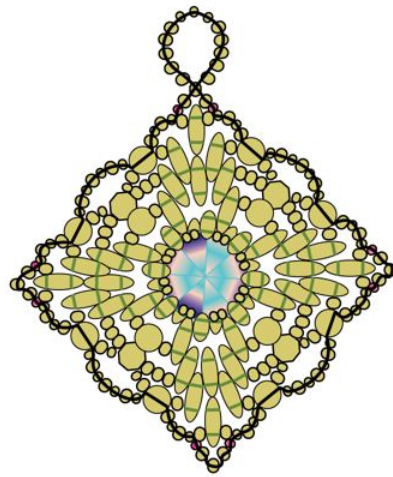
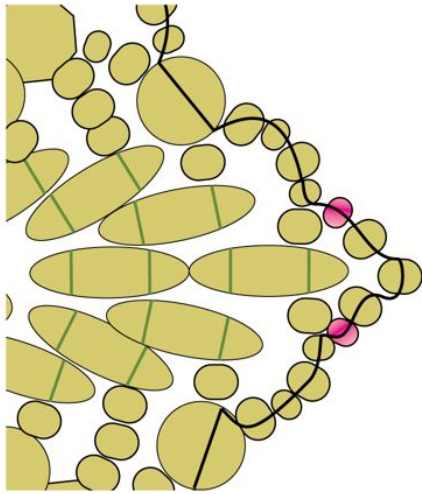
Just one more step to go! This is what you should have now. Keep in mind that the pendant should cup slightly backward.



## Step 12

We are embellishing and stabilizing the corners with As, as shown.

At every corner, insert an A between the picots and the sides, sewing through the As adjacent to the picots. Follow the diagrams to add 2As to each corner.



## Step 13

Sew along the sides again to reinforce the outer row, tying half-hitch knots along the way. After several good knots and after burying the tail thread in well, snip or burn the tail thread.

I like to loop a cord through this bail with a simple lark's head knot but you can also use jump rings to attach this pendant to a chain.



## Review Questions

- 1) When you see brackets like this “[ ]”, what are you supposed to do?
  - a) Sew back through the items in the brackets four times.
  - b) Repeat the items between the brackets.
  - c) The items between the brackets are optional.
- 2) Which beads form a “bezel cup” in the pendant to hold the Rivoli?
  - a) 15/0 beads
  - b) Super Duo beads
  - c) Rivoli Bezel beads

- 3) True/False. When you see yellow beads, these are beads from the previous step. The color is not representative of the actual bead color.
- a) True
  - b) False
- 4) What type of thread is recommended for this project?
- a) Fireline, in Smoke or Crystal
  - b) Dental floss
  - c) Nylon fishing line, in Smoke or Crystal
  - d) None of the above