

Accent Texture with Liver of Sulfur

By Patti Bullard, Ph.D.

Adding an antique finish can enhance and accentuate texture and can be achieved by using liver of sulfur (LOS).



Tool and Materials List – Don't forget Safety Glasses!

- Paper Towels
- Glass or plastic container
- Hot water (not boiling)
- Stirring utensil
- Stainless steel basket
- Disposable gloves to protect hands
- Liver of Sulfur Gel
- Sunshine Cloth (optional)
- Flexible nail file (optional)
- Safety glasses



Helpful Tip: The gel formulas of LOS have a longer shelf life than the lump form, but they both work the same to create a professional looking finish. LOS works fastest when the water is warmed, but not boiling. A crock-pot can be used to warm LOS, especially when doing a lot of pieces at once. However, I usually just put about a cup of water in a glass measuring cup and heat it in the microwave for 1 minute. LOS will work cold, only it takes a longer amount of time.

Just a few safety reminders:

- Always wear safety glasses!
- Avoid boiling to reduce fumes
- Avoid skin contact with LOS
- To dispose of LOS, simply dilute and flush it.
- Use adequate ventilation with Liver of Sulfur

Step 1

Drop a small amount of LOS gel into the warm water and stir to mix with a plastic spoon or stainless steel tweezers. To quickly achieve a dark finish, add enough LOS to make the water a dark golden brown color.



Step 2

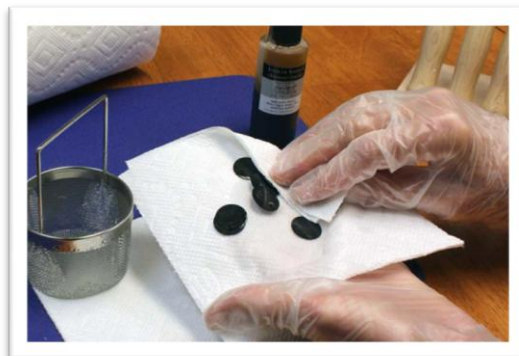
Immerse the disks into the solution. A stainless steel basket is handy when working with multiple small pieces, but stainless steel tweezers can also be used.



Step 3

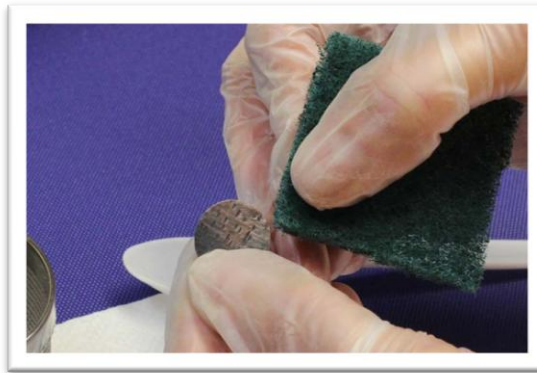


Remove the disks when the desired color is achieved.



Rinse thoroughly in clean water and dry.

Step 4



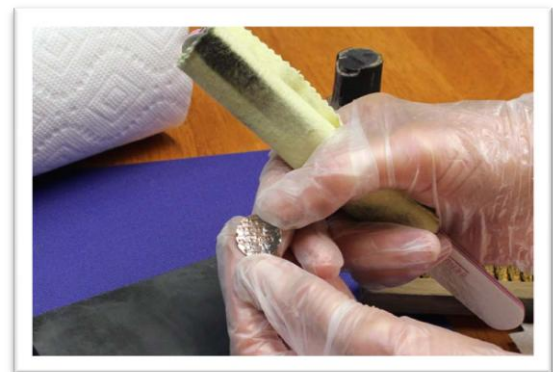
You can begin to remove the patina using either a piece of a green scrubber or 1000 grit wet/dry sandpaper. You can leave as much or as little as desired.



Brushing with a brass brush will burnish the metal and add a slight sheen, while also leaving a brushed look.

Step 5

It is often nice to add a higher shine to an antiqued finish, and this is easy to achieve in a matter of moments. Wrap a polishing cloth around a flexible nail file (Sunshine Cloths are a personal favorite). Buff the disk and watch the shine appear!



Step 6

You may wish to apply a finish such as a wax or spray sealer to help keep the piece from changing colors across time. However, it will eventually wear off. I like the “aged” look that an additional natural patina gives over time, so I usually just keep a polishing cloth or green scrubber handy to bring back the lights when desired.



Review Questions

- 1) Liver of Sulfur (LOS) works faster when it is:
 - a) warm
 - b) cold
- 2) Which LOS has a longer shelf life?
 - a) Gel or liquid form
 - b) Lump form
- 3) A brass brush will:
 - a) Remove some of the LOS finish
 - b) Burnish your metal
 - c) Both of the above
- 4) A stainless steel basket or pair of tweezers is safe to use with LOS:
 - a) True
 - b) False
- 5) Whenever working with any chemical such as LOS, it is best to avoid:
 - a) Contact with skin and eyes
 - b) Fumes
 - c) Both of the above